



Bespoke Trends
HERITAGE OF BESPOKE CULTURE!

Size (inch)	Collar	Chest	Waist	Sleeve	Length
13¾	13¾	36¼	31½	34¼	28¾
14	14	36¼	31½	34¼	28¾
14½	14½	38½	33¾	35	29¼
15	15	38½	33¾	35	29¼
15½	15½	41	36¼	35½	30
15¾	15¾	41	36¼	35½	30
16	16	43¼	38½	36½	30¼
16½	16½	43¼	38½	36½	30¼
17	17	45¾	41	37½	31
17½	17½	45¾	41	37½	31

Size (inch)	Collar	Chest	Waist	Sleeve*	Length**
14½	14½	40¼	35¾	35	30¾
15	15	40¼	35¾	35	30¾
15½	15½	42½	38¼	35½	31
15¾	15¾	42½	38¼	35½	31
16	16	45	40½	36½	32
16½	16½	45	40½	36½	32
17	17	47¼	43	37½	32¼
17½	17½	47¼	43	37½	32¼
17¾	17¾	49½	45¼	37¾	33

*For extra long sleeve, 2" will be added on sleeve and body length.

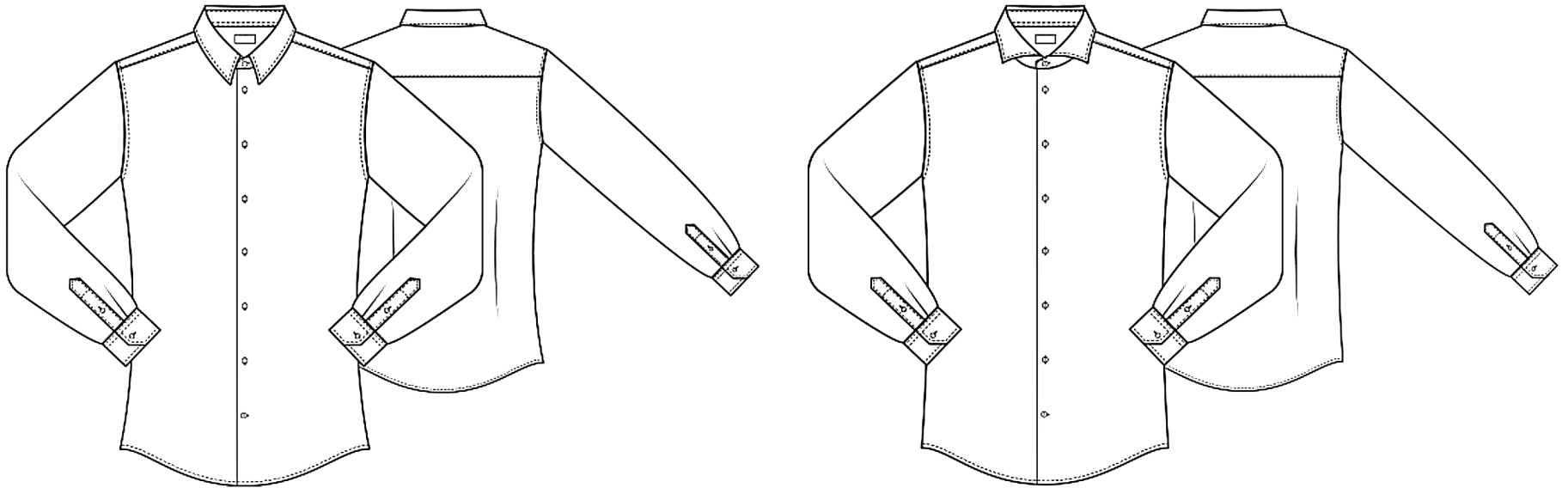
**All Green Ribbon shirts are 1¼" shorter than the specified body length measurement.

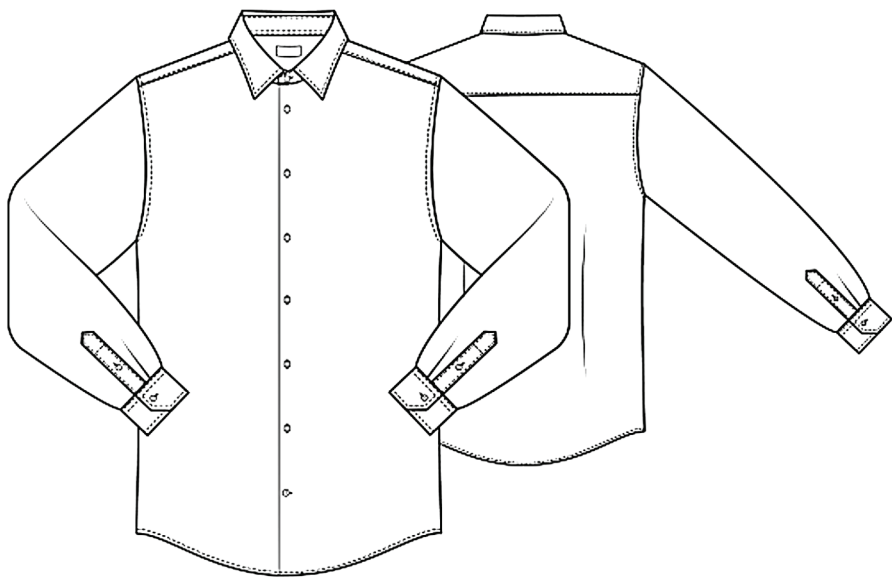
Size Guide

The ultimate shirt experience starts with the fit. At Bespoke Trendz, we offer four carefully designed styles to help every customer find an ideal match for their body type and personal tastes.

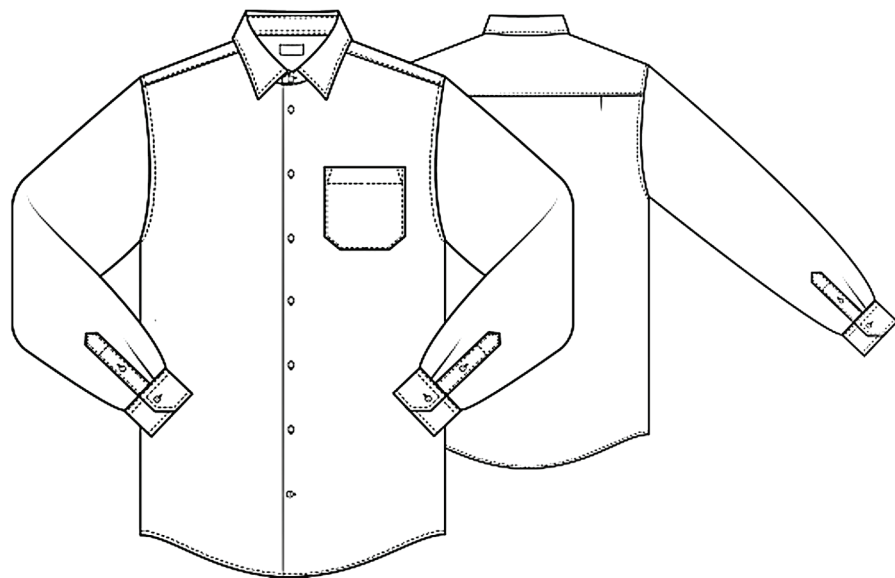
How to Measure ?

The ultimate shirt experience starts with the fit. At Bespoke Trendz , we offer four





Contemporary fit (Regular)



Classic fit

Size (inch)	Collar	Chest	Waist	Sleeve*	Length**
14½	14½	42½	39¼	35½	31
15	15	42½	39¼	35½	31
15½	15½	45	41¾	35¾	32
15¾	15¾	45	41¾	35¾	32
16	16	47¼	44	37	32¾
16½	16½	47¼	44	37	32¾
17	17	49½	46½	37¾	33
17½	17½	49½	46½	37¾	33
17¾	17¾	52	48¾	38¾	33½
18	18	52	48¾	38¾	33½
18½	18½	54¼	51¼	39¼	34¼

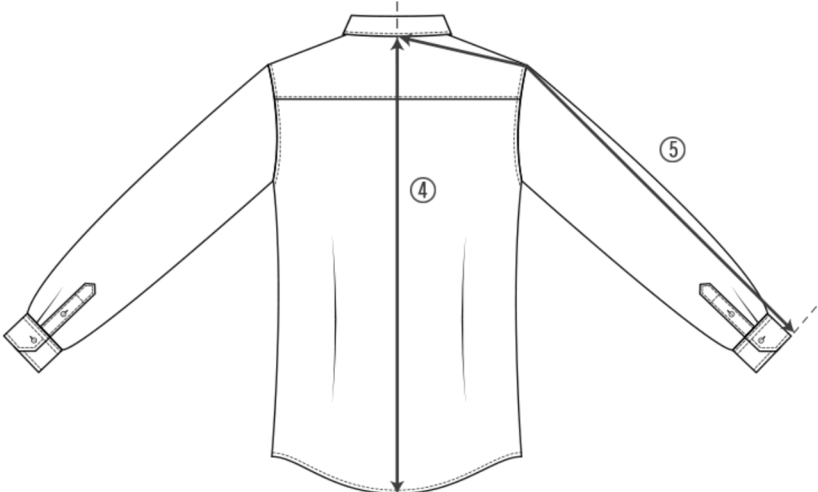
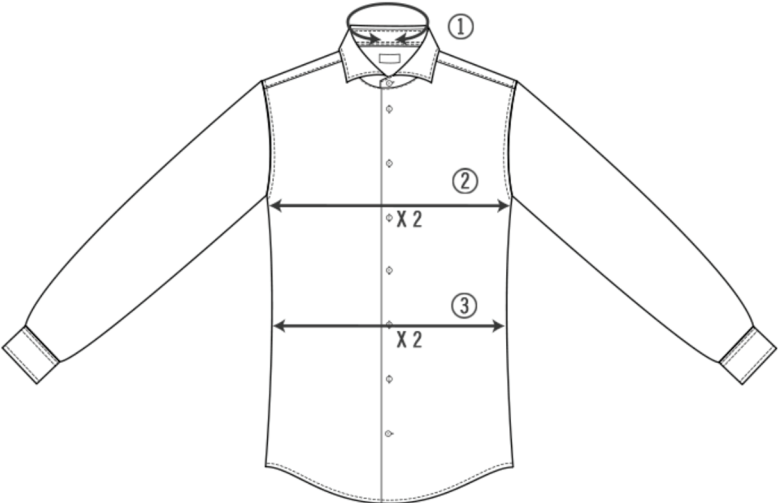
*For extra long sleeve, 2" will be added on sleeve and body length.

**All Green Ribbon shirts are 2" shorter than the specified body length measurement.

Size (inch)	Collar	Chest	Waist	Sleeve*	Length
15	15	43¼	41½	34¾	31
15½	15½	46	44	35	32
15¾	15¾	46	44	35	32
16	16	49¼	47¼	36¼	32¾
16½	16½	49¼	47¼	36¼	32¾
17	17	52	50¾	37	33
17½	17½	52	50¾	37	33
17¾	17¾	54¾	54	37½	33½
18	18	54¾	54	37½	33½
18½	18½	57½	57	38½	34½
19	19	57½	57	38½	34½
19½	19½	60¼	60¼	39	35
19¾	19¾	60¼	60¼	39	35
20	20	63	63½	40	35½

*For extra long sleeve, 2" will be added on sleeve and body length.

How to measure



1. NECK

Open the shirt and lay the collar flat. Measure straight from the button to the end of the buttonhole.

2. CHEST

Lay the shirt flat with buttons fastened and measure 1 cm under the armhole. Measure from side to side and double the measurement across the chest.

3. WAIST

Lay the shirt flat with buttons fastened and measure from side to side and double the measurement across the waist. The waist is located at the slimmest part of the shirt.

4. SHIRT LENGTH

Measure from center back down to the end of the hem.

5. SLEEVE

Measure from center back to the shoulder seam, then measure from the shoulder seam to the end of the cuff and combine these measurements.

Size Guide

The ultimate shirt experience starts with the fit. At Bespoke Trendz, we offer four carefully designed styles to help every customer find an ideal match for their body type and personal tastes.

How to Measure ?



Super slim



Slim fit

Size (inch)	Collar	Chest	Waist	Sleeve	Length
15M	15M	36A	31M	34A	28M
14	14	36A	31M	34A	28M
14M	14M	38M	33M	35	29A
15	15	38M	33M	35	29A
15M	15M	41	36A	35M	30
15M	15M	41	36A	35M	30
16	16	42A	38M	36M	30A
16M	16M	42A	38M	36M	30A
17	17	43M	41	37M	31
17M	17M	43M	41	37M	31

Size (inch)	Collar	Chest	Waist	Sleeve**	Length**
14.5	14.5	40A	35M	35	30M
15	15	40A	35M	35	30M
15.5	15.5	42M	38M	35.5	31
15M	15M	42M	38M	35.5	31
16	16	45	40M	36M	32
16.5	16.5	45	40M	36M	32
17	17	47A	45	37M	32M
17.5	17.5	47A	45	37M	32M
17M	17M	49M	45M	37M	33

*For extra long sleeve, 2" will be added on sleeve and body length.

**All Green Ribbon shirts are 1 1/4" shorter than the specified body length measurement.



Contemporary fit (Regular)



Classic fit

Size (inch)	Collar	Chest	Waist	Sleeve*	Length**
14M	14M	42M	39A	35M	31
15	15	42M	39A	35M	31
15M	15M	45	41M	35M	32
15M	15M	45	41M	35M	32
16	16	47A	44	37	32M
16M	16M	47A	44	37	32M
17	17	49M	46M	37M	33
17M	17M	49M	46M	37M	33
17M	17M	52	48M	38A	33M
18	18	52	48M	38A	33M
18M	18M	54A	51M	39A	34A

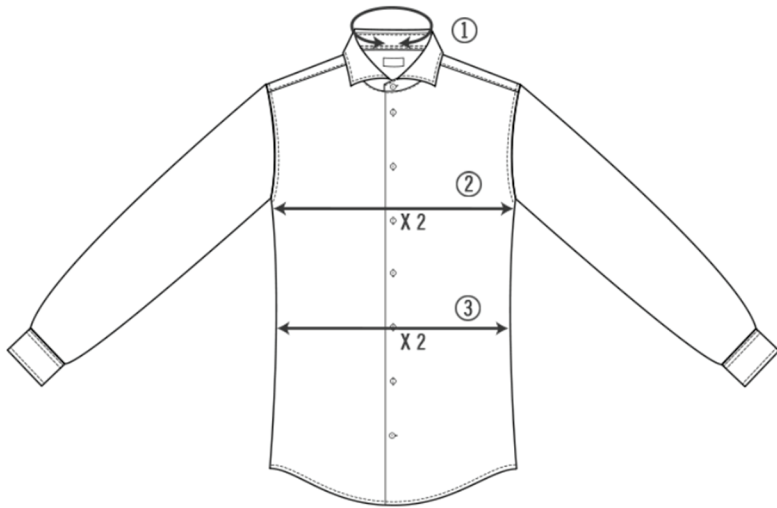
*For extra long sleeve, 2" will be added on sleeve and body length.

**All Green Ribbon shirts are 2" shorter than the specified body length measurement.

Size (inch)	Collar	Chest	Waist	Sleeve**	Length
15	15	45A	41M	34M	31
15.5	15.5	46	44	35	32
15M	15M	46	44	35	32
16	16	48A	47A	36A	32M
16.5	16.5	48A	47A	36A	32M
17	17	52	50M	37	33
17.5	17.5	52	50M	37	33
17M	17M	54M	54	37M	33M
18	18	54M	54	37M	33M
18.5	18.5	57M	57	38M	34M
19	19	57M	57	38M	34M
19.5	19.5	60A	60A	39	35
19M	19M	60A	60A	39	35
20	20	65	65M	40	35M

*For extra long sleeve, 2" will be added on sleeve and body length.

How to measure



1. NECK

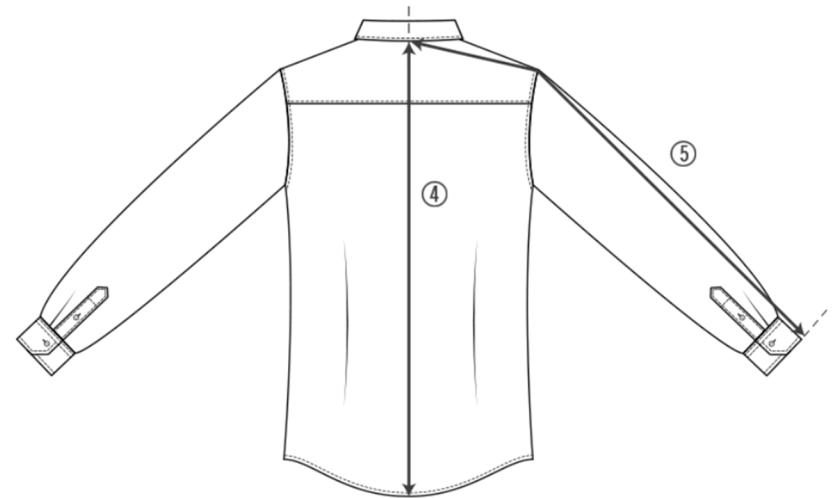
Open the shirt and lay the collar flat. Measure straight from the button to the end of the buttonhole.

2. CHEST

Lay the shirt flat with buttons fastened and measure 1 cm under the armhole. Measure from side to side and double the measurement across the chest.

3. WAIST

Lay the shirt flat with buttons fastened and measure from side to side and double the measurement across the waist. The waist is located at the slimmest part of the shirt.



4. SHIRT LENGTH

Measure from center back down to the end of the hem.

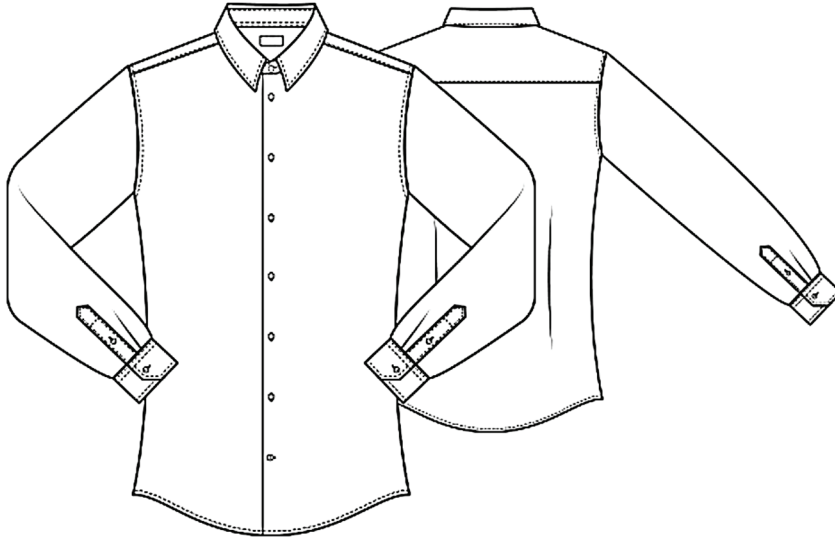
5. SLEEVE

Measure from center back to the shoulder seam, then measure from the shoulder seam to the end of the cuff and combine these measurements.

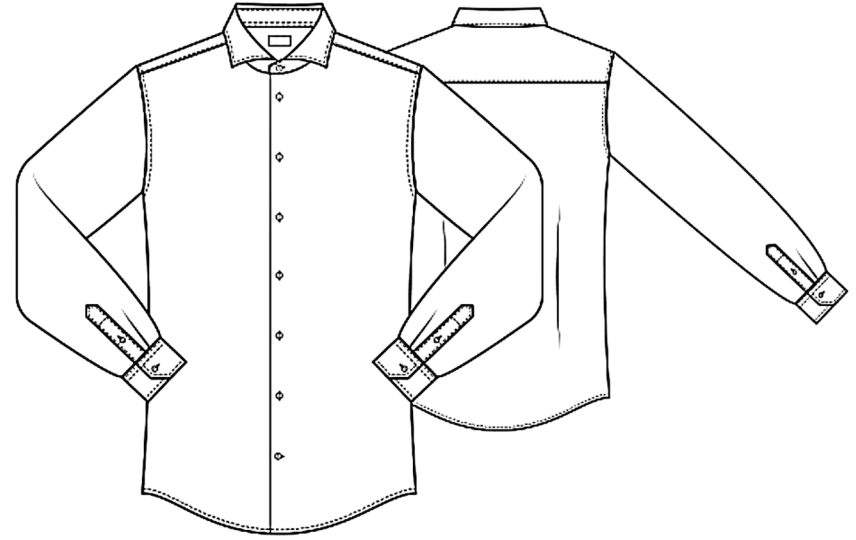
Size Guide

The ultimate shirt experience starts with the fit. At Bespoke Trendz, we offer four carefully designed styles to help every customer find an ideal match for their body type and personal tastes.

How to Measure ?



Super slim



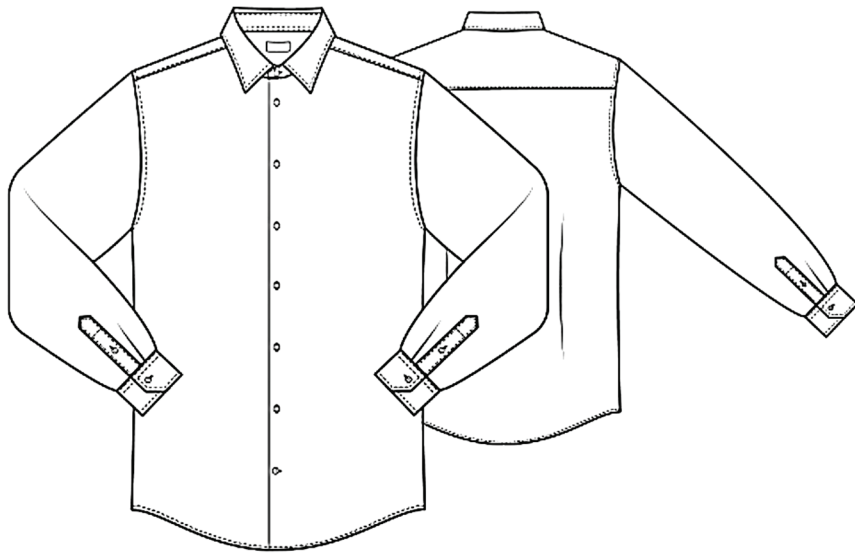
Slim fit

Size (inch)	Collar	Chest	Waist	Sleeve	Length
13¾	13¾	36¼	31½	34¾	28¾
14	14	36¼	31½	34¾	28¾
14½	14½	38½	33¾	35	29¼
15	15	38½	33¾	35	29¼
15½	15½	41	36¼	35½	30
15¾	15¾	41	36¼	35½	30
16	16	43¼	38½	36½	30¼
16½	16½	43¼	38½	36½	30¼
17	17	45¾	41	37½	31
17½	17½	45¾	41	37½	31

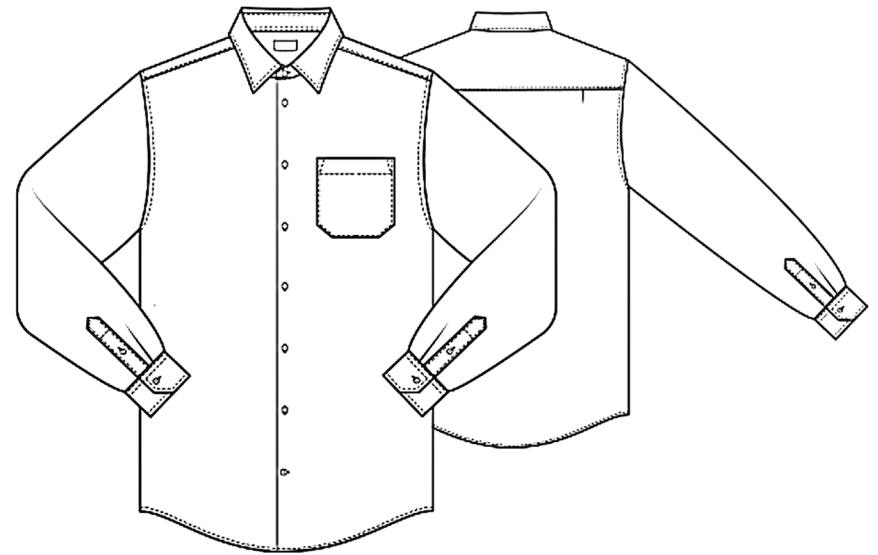
Size (inch)	Collar	Chest	Waist	Sleeve*	Length**
14½	14½	40¼	35¾	35	30¾
15	15	40¼	35¾	35	30¾
15½	15½	42½	38¼	35½	31
15¾	15¾	42½	38¼	35½	31
16	16	45	40½	36½	32
16½	16½	45	40½	36½	32
17	17	47¼	43	37½	32¼
17½	17½	47¼	43	37½	32¼
17¾	17¾	49½	45¼	37¾	33

*For extra long sleeve, 2" will be added on sleeve and body length.

**All Green Ribbon shirts are ¼" shorter than the specified body length measurement.



Contemporary fit (Regular)



Classic fit

Size (inch)	Collar	Chest	Waist	Sleeve*	Length**
14½	14½	42½	39¾	35½	31
15	15	42½	39¾	35½	31
15½	15½	45	41¾	35¾	32
15¾	15¾	45	41¾	35¾	32
16	16	47¼	44	37	32¾
16½	16½	47¼	44	37	32¾
17	17	49½	46½	37¾	33
17½	17½	49½	46½	37¾	33
17¾	17¾	52	48¾	38¼	33½
18	18	52	48¾	38¼	33½
18½	18½	54¼	51¼	39¼	34¼

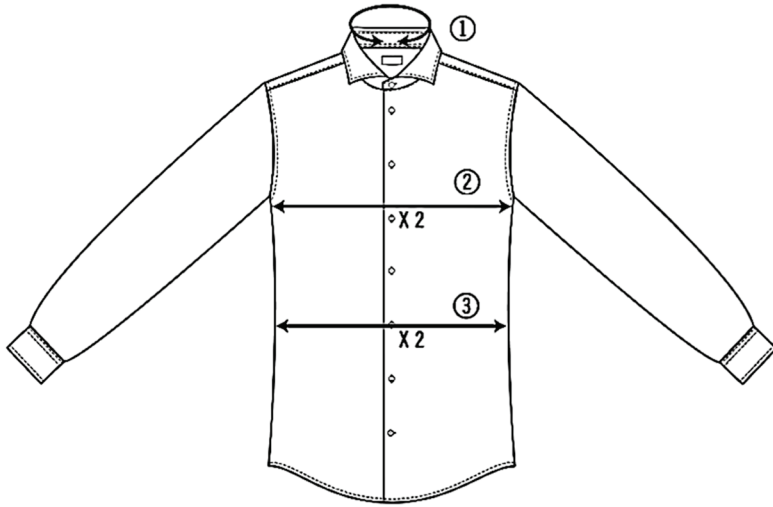
*For extra long sleeve, 2" will be added on sleeve and body length.

**All Green Ribbon shirts are 2" shorter than the specified body length measurement.

Size (inch)	Collar	Chest	Waist	Sleeve*	Length
15	15	43¼	41½	34¾	31
15½	15½	46	44	35	32
15¾	15¾	46	44	35	32
16	16	49¼	47¼	36¼	32¾
16½	16½	49¼	47¼	36¼	32¾
17	17	52	50¾	37	33
17½	17½	52	50¾	37	33
17¾	17¾	54¾	54	37½	33½
18	18	54¾	54	37½	33½
18½	18½	57½	57	38½	34½
19	19	57½	57	38½	34½
19½	19½	60¼	60¼	39	35
19¾	19¾	60¼	60¼	39	35
20	20	63	63½	40	35½

*For extra long sleeve, 2" will be added on sleeve and body length.

How to measure



1. NECK

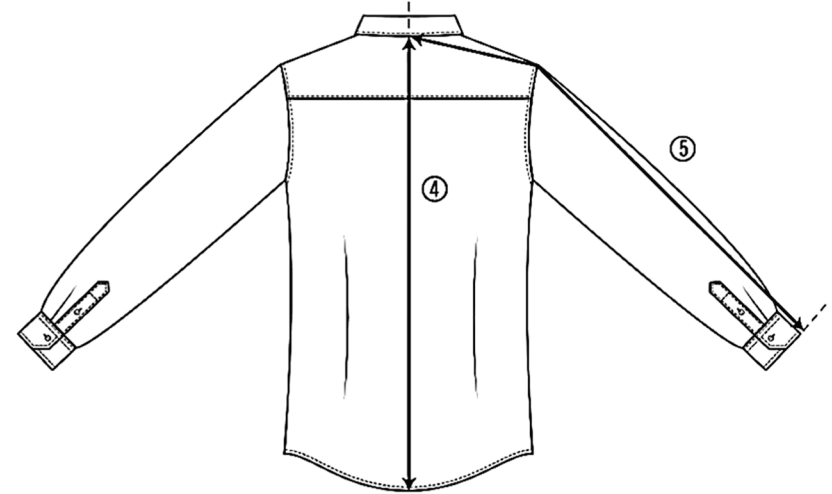
Open the shirt and lay the collar flat. Measure straight from the button to the end of the buttonhole.

2. CHEST

Lay the shirt flat with buttons fastened and measure 1 cm under the armhole. Measure from side to side and double the measurement across the chest.

3. WAIST

Lay the shirt flat with buttons fastened and measure from side to side and double the measurement across the waist. The waist is located at the slimmest part of the shirt.



4. SHIRT LENGTH

Measure from center back down to the end of the hem.

5. SLEEVE

Measure from center back to the shoulder seam, then measure from the shoulder seam to the end of the cuff and combine these measurements.